

# BioWhittaker™ Classical Media for Consistent Cell Culture Results



# BioWhittaker™ Classical Media

## BioWhittaker™ Media and Reagents

- **Premium quality** — The finest workmanship and materials give you confidence in your results
- **World-class quality systems** — Designed to meet even the most rigorous standards of biopharmaceutical customers
- **Outstanding selection** — Hundreds of formulations and packaging options available
- **Ultra-pure water** — Validated water-for-injection (WFI) system meets or exceeds all specifications for both the US and European Pharmacopeia
- **Trusted purity** — USP grade or equivalent chemical components used

Trust BioWhittaker™ quality, as others have for decades. You deserve the best. Order your RPMI, DMEM, MEM, DPBS or other cell culture products today.



# Contents

Classical Media	4–7
Reagents	8–10

# Classical Media

## Dulbecco's Modified Eagle's Media (DMEM)

Cat. No.	Size	Without L-glutamine	With Sodium Pyruvate	Without Phenol Red	With HEPES	With 1.0 g/L Glucose	With 4.5 g/L Glucose	Powder	Hybridoma Screened	With UG I*
12-614F	500 mL	■	■				■			
12-614Q	1 L	■	■				■			
12-604F	500 mL		■				■			
12-604Q	1 L		■				■			
BE12-604F/U1	500 mL	■	■				■			■
12-914F	500 mL	■	■				■		■	
12-917F	500 mL	■	■	■			■			
12-707F	500 mL	■	■			■				
12-708F	500 mL	■	■		■	■				
12-709F	500 mL	■	■		■		■			
12-733F	500 mL	■					■			
12-733Q	1 L	■					■			
12-741F	500 mL						■			

\* With UltraGlutamine I

DMEM is used in a wide range of mammalian cell culture applications. The high glucose version is well suited to high density suspension culture. The low glucose formula is used for adherent dependent cells.

## Iscove's Modified Dulbecco's Medium (IMDM)

Cat. No.	Size	Without L-glutamine	With HEPES	Hybridoma Screened	Powder
12-722F	500 mL		■		
12-722Q	1 L		■		
12-726F	500 mL	■	■		
12-726Q	1 L	■	■		
12-915F	500 mL		■	■	

IMDM is suitable for fast growing cells. All formulas contain HEPES for added buffering.

## DMEM:F12

Cat. no.	Size	Without L-glutamine	With HEPES	With 3.151 g/L Glucose	With UG I*	Powder
12-719F	500 mL		■	■		
12-719Q	1 L		■	■		
BE04-687Q	1 L			■		
BE04-687F/U1	500 mL	■		■	■	

\* With UltraGlutamine I

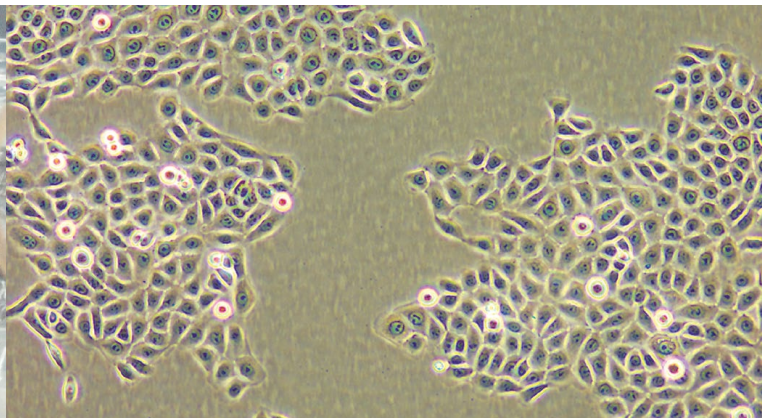
DMEM:F12 combines the richness of F12 with the higher component concentrations of DMEM. This media is well suited for clonal density cultures.

Minimum Essential Media – Eagle (MEM Eagle) (E-MEM)

Cat. No.	Size	With L-glutamine	With Sodium Pyruvate	Without Phenol Red	With HEPES	With HBSS	With EBSS	Powder	With NEAA	With Pen-strep-amph B	Without Na-bicarbonate	Without Calcium	With UG I*	With Nucleosides
12-169F (Alpha)	500 mL		■				■		■					
BE02-002F	500 mL		■				■		■				■	■
12-611F	500 mL	■					■							
12-6110	1 L	■					■							
12-125F	500 mL						■							
12-1250	1 L						■							
12-662F	500 mL		■				■		■					
12-6620	1 L		■				■		■					
12-136F	500 mL				■		■							
12-1360	1 L				■		■							
12-736E	100 mL	■			■		■		■	■				
12-736F	500 mL	■			■		■		■	■				
12-684F (10x)	500 mL										■			
12-668E (2x)	100 mL			■			■							
06-174G	450 mL	■					■		■			■		
12-127F	500 mL					■								
12-137F	500 mL				■	■								
04-7190 (Joklik's)	1 L	■					■					■		

\* With UltraGlutamine I

Minimum essential media (E-MEM) is suitable for a diverse spectrum of mammalian cell types. It is available with either Hanks' or Earle's salts. MEM-Hanks' (12-127F or 12-137F) does not require a CO<sub>2</sub> enriched atmosphere. Joklik's modification is intended for suspension culture.



## Insect Media

		With L-glutamine	With FBS	With Yeastolate	With Lactalbumin Hydrolysate	With Gentamicin
<b>Cat. No.</b>	<b>Size</b>					
<b>Grace's Insect Media</b>						
04-457F	500 mL	■				
04-649F	500 mL	■		■	■	■
<b>Schneider's Drosophila Medium</b>						
04-3510	1 L	■		■		
<b>TC-100 Insect Medium</b>						
BE02-011F	500 mL	■				

## Medium 199

		With L-glutamine	With HEPES	With HBSS	With EBSS	With 1.4 g/L Na-bicarbonate	With 2.2 g/L Na-bicarbonate
<b>Cat. No.</b>	<b>Size</b>						
12-117F	500 mL	■	■		■		■
12-117Q	1 L	■	■		■		■
12-118F	500 mL	■	■	■		■	
12-119F	500 mL	■			■		■
12-109F	500 mL	■		■		■	

Medium 199 is formulated for chick embryo fibroblast culture. These four formulations require a CO<sub>2</sub> enriched atmosphere.

## RPMI 1640

		With L-glutamine	Without Phenol Red	With HEPES	Powder	With Penicillin - Streptomycin	Without Na-bicarbonate	With MOPS Buffer	With Ultra-Glutamine I	Without D-glucose
<b>Cat. No.</b>	<b>Size</b>									
12-702F	500 mL	■								
12-702Q	1 L	■								
BE12-702F/U1	500 mL								■	
12-167F	500 mL									
12-167Q	1 L									
12-115F	500 mL	■		■						
12-115Q	1 L	■		■						
04-525F	500 mL	■					■	■		
12-918F	500 mL		■							
09-774E	100 mL	■		■		■				
09-774F	500 mL	■		■		■				
BE12-752F	500 mL	■								■

RPMI is a general purpose media with a broad range of applications for mammalian cells, especially hematopoietic cells. RPMI with MOPS (04-525F) is for certain mycological assays.



## Other Classical Media

Cat. No.	Size	Comments
<b>Basal Medium Eagle (BME)</b>		
12-132A	Cryoprotective medium without L-glutamine, with DMSO, 100 mL	A minimal medium suitable for a variety of cell types, it is a historical precursor to minimum essential media (MEM)
12-105F	With EBSS, without L-glutamine, 500 mL	
<b>Glasgow Minimum Essential Medium (GMEM)</b>		
12-739F	With L-glutamine, 500 mL	Designed to support BHK-21 cells
<b>Ham's F-10 Medium</b>		
12-618F	With L-glutamine, 500 mL	Developed for low density (clonal) growth of near-diploid CHO cells
BE02-014F	With UltraGlutamine, without thymidine, 500 mL	Developed for <sup>3</sup> H-thymidine incorporation assays.
<b>Ham's F-12 Medium</b>		
12-615F	With L-glutamine, 500 mL	Developed for low density (clonal) growth of CHO cells
<b>L-15 (Leibovitz) Medium</b>		
12-700F	Without L-glutamine, 500 mL	Developed for fast growing tumor cells, this formula does not require a CO <sub>2</sub> enriched atmosphere. The bicarbonate-free medium is buffered with elevated levels of amino acids.
12-700Q	Without L-glutamine, 1L	
<b>McCoy's 5A Medium</b>		
12-688F	With L-glutamine, 500 mL	Designed for human lymphocyte culture
12-168F	With L-glutamine and HEPES, 500 mL	
<b>NCTC-109</b>		
12-923E	With EBSS and L-glutamine, 100 mL	A complex formula used to supplement hybridoma medium

# Reagents

## Dulbecco's Phosphate Buffered Saline

Cat. No.	Size	Without Phenol Red	With Calcium and Magnesium	Without Calcium or Magnesium	With Glucose	With Sodium Pyruvate	Powder
17-513F	500 mL	<input checked="" type="checkbox"/>	<input checked="" type="checkbox"/>	<input type="checkbox"/>	<input type="checkbox"/>	<input type="checkbox"/>	<input type="checkbox"/>
17-5130	1 L	<input checked="" type="checkbox"/>	<input checked="" type="checkbox"/>	<input type="checkbox"/>	<input type="checkbox"/>	<input type="checkbox"/>	<input type="checkbox"/>
17-512F	500 mL	<input checked="" type="checkbox"/>	<input type="checkbox"/>	<input checked="" type="checkbox"/>	<input type="checkbox"/>	<input type="checkbox"/>	<input type="checkbox"/>
17-5120	1 L	<input checked="" type="checkbox"/>	<input type="checkbox"/>	<input checked="" type="checkbox"/>	<input type="checkbox"/>	<input type="checkbox"/>	<input type="checkbox"/>
04-4790	1 L	<input checked="" type="checkbox"/>	<input checked="" type="checkbox"/>	<input type="checkbox"/>	<input checked="" type="checkbox"/>	<input checked="" type="checkbox"/>	<input type="checkbox"/>
17-515F	500 mL (10X)	<input checked="" type="checkbox"/>	<input type="checkbox"/>	<input checked="" type="checkbox"/>	<input type="checkbox"/>	<input type="checkbox"/>	<input type="checkbox"/>
17-5150	1 L (10X)	<input checked="" type="checkbox"/>	<input type="checkbox"/>	<input checked="" type="checkbox"/>	<input type="checkbox"/>	<input type="checkbox"/>	<input type="checkbox"/>

## Hanks' BSS (1X)

Cat. No.	Size	With Phenol Red	Without Phenol Red	With Calcium and Magnesium	Without Calcium or Magnesium
10-508F	500 mL	<input checked="" type="checkbox"/>	<input type="checkbox"/>	<input checked="" type="checkbox"/>	<input type="checkbox"/>
10-5080	1 L	<input checked="" type="checkbox"/>	<input type="checkbox"/>	<input checked="" type="checkbox"/>	<input type="checkbox"/>
10-543F	500 mL	<input checked="" type="checkbox"/>	<input type="checkbox"/>	<input type="checkbox"/>	<input checked="" type="checkbox"/>
10-5430	1 L	<input checked="" type="checkbox"/>	<input type="checkbox"/>	<input type="checkbox"/>	<input checked="" type="checkbox"/>
10-527F	500 mL	<input type="checkbox"/>	<input checked="" type="checkbox"/>	<input checked="" type="checkbox"/>	<input type="checkbox"/>
10-547F	500 mL	<input type="checkbox"/>	<input checked="" type="checkbox"/>	<input type="checkbox"/>	<input checked="" type="checkbox"/>
04-3150	1 L	<input type="checkbox"/>	<input checked="" type="checkbox"/>	<input type="checkbox"/>	<input checked="" type="checkbox"/>



## Buffered saline

Cat. No.	Size	Without Phenol Red	Without Calcium or Magnesium	With HEPES
<b>Phosphate Buffered Saline</b>				
17-516F	500 mL	<input checked="" type="checkbox"/>	<input checked="" type="checkbox"/>	<input type="checkbox"/>
17-5160	1 L	<input checked="" type="checkbox"/>	<input checked="" type="checkbox"/>	<input type="checkbox"/>
17-5170	1 L	<input checked="" type="checkbox"/>	<input checked="" type="checkbox"/>	<input type="checkbox"/>
<b>UltraSaline A</b>				
12-747F	500 mL	<input checked="" type="checkbox"/>	<input type="checkbox"/>	<input checked="" type="checkbox"/>



## Penicillin-Streptomycin Mixtures

Cat. No.	Size	5,000 Units Penicillin – 5,000 µg Streptomycin	10,000 Units Penicillin – 10,000 µg Streptomycin	20,000 Units Penicillin – 20,000 µg Streptomycin	25,000 Units Penicillin – 25,000 µg Streptomycin	25 µg/mL Amphotericin B	With L-glutamine
17-603E	100 mL	■					
17-602E	100 mL		■				
17-602F	500 mL		■				
09-757F	500 mL			■			
17-745H	20 mL		■			■	
17-745E	100 mL		■			■	

Description	Cat. No.	Size
<b>L-glutamine (200 mM)</b>		
	17-605C	50 mL
	17-605E	100 mL
	17-605F	500 mL
(Hybridoma screened)	17-905C	50 mL
<b>Water for Cell Culture Use</b>		
	17-724F	500 mL
	17-724Q	1 L
	08-199F	20 L
(Flexible packaging)	08-199E	200 L
<b>Supplements</b>		
Insulin, transferrin, selenium (ITS) (500X)	17-838Z	5 mL
Insulin, transferrin, ethanolamine, selenium (ITES) (500X)	17-839Z	5 mL
MEM Eagle non-essential amino acid solution, 10 mM (100X)	13-114E	100 mL
MEM Eagle vitamin mixture (100X)	13-607C	50 mL

Description	Cat. No.	Size
<b>Buffers and Reagents</b>		
ACK lysing buffer (1X)	10-548E	100 mL
Dextrose-gelatin-veronal (DGV)	10-539B	500 mL
	17-737E	100 mL
HEPES buffer (1M), in normal saline	17-737F	500 mL
Veronal buffer (5X)	12-624E	100 mL
Trypan blue 0.4% solution	17-942E	100 mL
Lymphocyte separation medium 1.077	17-829E	100 mL
	17-829F	500 mL
Sodium pyruvate solution (100mM)	13-115E	100 mL
Sodium bicarbonate, 7.5%	17-613E	100 mL
<b>Cell Harvesting Reagents</b>		
Trypsin 1:250 (10X) 2.5% in Hanks' BSS without calcium or magnesium	17-160E	100 mL
	17-160F	500 mL
Trypsin Versene® (EDTA) mixture (1X)	17-161F	500 mL
Trypsin Versene® (EDTA) mixture (10x)	BE02-007E	100 mL
Versene® (EDTA) 0.02%	17-711E	100 mL
<b>Antibiotics/Antimycotics</b>		
Amphotericin B (250 µg/mL)	17-836R	20 mL
	17-836E	100 mL
Gentamicin sulfate 50 mg/mL, screw cap vial	17-518Z	1 X 10 mL
	17-518L	10 X 10 mL
Gentamicin sulfate 50 mg/mL, crimp top vial	17-528Z	1 X 10 mL
	17-519Z	1 X 10 mL
Gentamicin sulfate 10 mg/mL, screw cap vial	17-519L	10 X 10 mL
<b>Freezing Medium</b>		
Cryoprotective Freezing Medium	12-132A	100 mL
ProFreeze™ CD (2x) Freeze Medium- Chemically Defined	12-769E	100 mL
<b>Serum Alternative</b>		
HL-1™ Fetal Bovine Serum Substitute (100x) - Chemically Defined	77227	10 mL



## Contact Information

### North America

Customer Service: + 1 800 638 8174 (toll free)

order.us@lonza.com

Scientific Support: + 1 800 521 0390 (toll free)

scientific.support@lonza.com

### Europe

Customer Service: + 32 87 321 611

order.europe@lonza.com

Scientific Support: + 32 87 321 611

scientific.support.eu@lonza.com

### International

Contact your local Lonza distributor

Customer Service: +1 301 898 7025

Fax: +1 301 845 8291

scientific.support@lonza.com

### International Offices

Australia	+ 61 3 9550 0883
Belgium	+ 32 87 321 611
Brazil	+ 55 11 2069 8800
France	0800 91 19 81 (toll free)
Germany	0800 182 52 87 (toll free)
India	+ 91 22 4342 4000
Japan	+ 81 3 6264 0660
Luxemburg	+ 32 87 321 611
Singapore	+ 65 6521 4379
The Netherlands	0800 022 4525 (toll free)
United Kingdom	0808 234 97 88 (toll free)

Lonza Cologne GmbH – 50829 Cologne Germany

For research use only. Not for use in diagnostic procedures.

Versene® is a trademark of Dow Chemical Company.

All trademarks belong to Lonza or its affiliates or to their respective third party owners. The information contained herein is believed to be correct and corresponds to the latest state of scientific and technical knowledge. However, no warranty is made, either expressed or implied, regarding its accuracy or the results to be obtained from the use of such information and no warranty is expressed or implied concerning the use of these products. The buyer assumes all risks of use and/or handling. Any user must make his own determination and satisfy himself that the products supplied by Lonza Group Ltd or its affiliates and the information and recommendations given by Lonza Group Ltd or its affiliates are (i) suitable for intended process or purpose, (ii) in compliance with environmental, health and safety regulations, and (iii) will not infringe any third party's intellectual property rights.

©2017 Lonza. All rights reserved.  
CD-BR001 10/17



[www.lonza.com/research](http://www.lonza.com/research)  
[www.lonza.com](http://www.lonza.com)